

# Pacifica School District

## Plan for Return to In-Person Learning

February 10, 2021

# Objectives for Presentation

Review and approve Pacifica School District's Plan for Return to In-Person Instruction

- Health and Safety from the COVID-19 Guidance Checklist
- Hybrid Instruction

Decide on a target for Return to In-Person Instruction

# Tier Assignments

County risk level	Adjusted case rate* 7-day average of daily COVID-19 cases per 100K with 7-day lag, adjusted for number of tests performed	Positivity rate** 7-day average of all COVID-19 tests performed that are positive	
		Entire county	Health equity quartile
<b>WIDESPREAD</b>  Many non-essential indoor business operations are closed	<b>More than 7.0</b> Daily new cases (per 100k)	<b>More than 8.0%</b> Positive tests	
<b>SUBSTANTIAL</b>  Some non-essential indoor business operations are closed	<b>4.0 – 7.0</b> Daily new cases (per 100k)	<b>5.0 – 8.0%</b> Positive tests	<b>5.3 – 8.0%</b> Positive tests
<b>MODERATE</b>  Some indoor business operations are open with modifications	<b>1.0 – 3.9</b> Daily new cases (per 100k)	<b>2.0 – 4.9%</b> Positive tests	<b>2.2 – 5.2%</b> Positive tests
<b>MINIMAL</b>  Most indoor business operations are open with modifications	<b>Less than 1.0</b> Daily new cases (per 100k)	<b>Less than 2.0%</b> Positive tests	<b>Less than 2.2%</b> Positive tests

# Current tier assignment on February 2nd



## Current tier assignments as of Feb 9

New slide

Updated  
with new  
tier  
assignment  
Feb 9

Tier assignments may occur any day of the week and may occur more than once a week



# Priorities in our Return to School Plan

*Board of Trustees, June 24, 2020*

1. Our highest priority is the safety of students, their families and our staff.
2. To the degree that we can do so safely, we want to have students on campus as much as possible.
3. We will focus on the students who experienced the largest gap in learning during distance learning. This includes students who receive Special Education services, are English learners, foster youth or socioeconomically disadvantaged.
4. We want to prioritize the social-emotional health of our students, their families and our staff.

# When will we return to school?

Decision will be based on public health data and our ability to meet the requirements for safety, testing and availability of contact tracing.

1. Do we wait until educators have had access to vaccine?
2. Do we pick a tier assignment? (ie Moderate- Orange)

# New California Department of Public Health Guidance

Update from July 17th guidance

Consolidation of previous guidance

New requirement- Every two weeks, reporting on school opening

**COVID-19 and  
Reopening In-Person  
Instruction Framework  
& Public Health  
Guidance for K-12  
Schools in California,  
2020-2021 School Year**

**January 14, 2021**





# Return to School Task Force

**October 20th** - Introduction to Work of the Task Force and Guidance

**November 4th** - Introduction to drafts of the Health and Safety Plan and Hybrid Learning Plan. Special Education Team met and discussed barriers and concerns.

**November 17th and December 1st** - Site based teams working on School Site Planning Considerations.

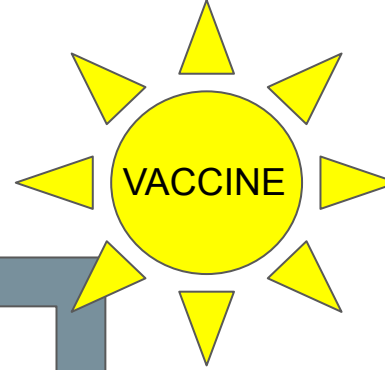
**December 15-** Update on California, Bay Area and Return to School. Final touches on site planning.

**January 12, 2021-** Highlights of the plan, what we know now and overcoming obstacles.

**January 26, 2021-** Updates, Health and Safety Plan and incremental steps

Future meetings will focus on site preparations and developing training materials for students and families

# Implementation in January, 2021



Prepare for Hybrid  
Learning

Begin Learning Hubs

Employee Health  
Screening and  
Temperature  
Checking

Employee Training on  
Health and Safety  
Procedures

Employee COVID  
Testing

# An Incremental Approach for Students' Return to School



# Hybrid Learning Plan

# Hybrid Learning Overview

**Hybrid learning requires students to learn both in-school as well as at-home.** Hybrid learning permits us to return to in-person learning by providing space for physical distancing and stable groups.

**In-Person Learning** - It is essential that students engage in rigorous instruction.

**At-home learning** - plan meaningful activities and partner with families and students so that they feel supported with engaging in those activities on a daily basis.

# Hybrid Learning Schedule

## Students divided into two groups (Group A and Group B)

- **Group A -**

- Mondays and Tuesdays In-Person Learning
- Wednesdays, Thursdays and Fridays At-Home learning

- **Group B -**

- Mondays, Tuesdays and Wednesday At-Home Learning
- Thursdays and Fridays In-Person Learning

# Sample Schedules for 2 day In-Person Learning

Kindergarten - 180 instructional minutes minimum daily

- Three 60 minute learning blocks with breaks in between
    - ELA - 8:30 - 9:30; Recess 9:30 - 9:50; Math - 9:50 - 10:50; Science/Social Studies 10:50-11:30
- 

1st, 2nd, 3rd grades - 230 instructional minutes minimum daily

- Three 75 minute learning blocks with breaks in between
    - ELA - 8:30 - 9:45; Recess 9:45 - 10:00; Math -10:00 - 11:15; Science/Social Studies 11:15 - 12:30
- 

4th-5th grades - 240 instructional minutes minimum daily

- Three 80 minute learning blocks with breaks in between
    - ELA - 8:30 - 9:50; Recess 9:50 - 10:10; Math - 10:10 - 11:30; Science/Social Studies 11:30-12:50
-

# 6th - 8th Sample Schedule for 2 day in-Person Learning

6th-8th grades -

- 240 instructional minutes minimum daily
- Three 80 minute learning Blocks with short breaks for passing in between
- Comprehensive Middle School (Ingrid B Lacy) may have alternate schedule

Time	In Person Day 1	In Person Day 2
<b>8:45 - 9:00</b>	Arrival/Screening	Arrival/Screening
<b>9:00 - 10:20</b>	First Period	Fourth Period
<b>10:20 - 10:24</b>	Passing	Passing
<b>10:24 - 11:44</b>	Second Period	Fifth Period
<b>11:44 - 11:48</b>	Passing	Passing
<b>11:48 - 1:08</b>	Third Period	Sixth Period
<b>1:08 - 1:15</b>	Dismissal	Dismissal



# At-Home Learning Guidelines

- **3 Days** Each Week
- Provide a total of 3-4 hours of learning daily: at least 180 minutes for Kindergarten, 230 minutes for grades 1-3, and 240 minutes for grades 4-8.
- Provide **common and consistent** at-home learning **routines and procedures**
- Provide **learning supports** to guide students at home
- Use **learning software** that provides lesson, practice, and feedback to students
- Clearly **define expectations, support, and resources** for at-home learning

# Plan to Return to In-Person Instruction

- Stable Group Structures
- Entrance, Egress, and Movement within the School
- Face Coverings and other Essential Protective Gear
- Health Screenings for Students and Staff
- Healthy Hygiene Practices
- Identification and Tracing of Contacts
- Staff Training and Education
- Testing of Staff
- Testing of Students
- Reporting of Cases
- Communication Plans

# Stable Groups

Approximately half the class

Students stay together throughout the day and will not mix with other classes

Recess together

Class will use a specific bathroom

# Arriving, Dismissal and Movement within the School

Staggered start and end time to limit large group gatherings

Students will enter classroom from outside

# Face Coverings and Protection

Students and staff will wear face coverings with specific exemptions for students who are not able to wear a mask.

Classrooms or settings where students are not able to mask, or there is additional exposure through bodily fluids, will use additional PPE.

# Health Screenings

All staff reporting to work on site complete the health questionnaire each day and will have a daily temperature check.

Families will complete the symptom screener (digitally or paper) and then have a temperature check at school.

# Multiple Layers of Safety (Four Pillars)

1. Stable groups and limited gatherings
2. Face coverings
3. Physical distancing- 6 feet
4. Adequate ventilation
5. Hand hygiene
6. Symptom screening and close contact exposure screening
7. Surveillance testing for staff

# Cleaning and Air Quality

Disinfection and Cleaning

Additional Custodians during the day to frequently clean high touch surfaces and sinks

Soap for handwashing and hand sanitizer

Communication around completion of cleaning in classrooms and common areas

Windows and doors will be open

We have Merv 13 filters in our HVAC units and changed every 4 months

Ventilation recommendation during poor air quality days



# Training for Staff, Families and Students

- Staff training on Covid-19 and mitigation methods in January
- Staff will receive training at staff meetings and through virtual and/or online education regarding school specific safety protocols prior to students returning to in-person learning.
- Custodians will participate in additional safety training
- Information will also be sent to parents from school sites and district level communications regarding the protocols and procedures school sites are using to ensure safety on our campuses. Safety protocols will also be posted on the District and school websites.
- Students will be welcomed back to campus in a measured, sequential approach. Training for families and students will take place virtually prior to returning to school. Students will also be trained in safety protocols as they return to the classroom.

# Covid-19 Testing

Staff on site participate in surveillance testing every two weeks or every week for staff that work across multiple sites.

In response to a positive case, the District will offer response testing to asymptomatic close contacts (staff and students). Individuals who are symptomatic should be tested in a health care setting.

Need to establish a pathway for student testing.

# Identification and Contact Tracing

Staff report a positive case or close contact to their supervisor who contacts HR.

Families report a positive case or close contact to the school principal.

Staff/Student stays home

Principal/HR communicates with the San Mateo Health Office

Determine the individuals who would be close contacts and notify them. Close contacts stay home and quarantine for 10 days and monitor symptoms. Test after 5 to 7 days (response testing)

Notify the staff and parents of the school site if positive case was at school

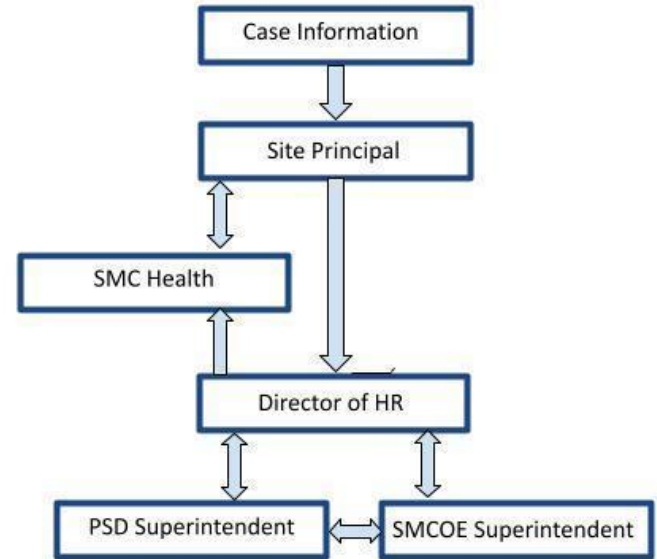
# Reporting of Cases

Staff report a positive case or close contact to their supervisor who contacts HR.

Families report a positive case or close contact to the school principal.

Principal/HR communicates with the San Mateo Health Office

Superintendent communicates with SMCOE Superintendent



# Communication with families regarding a positive case

Determine the individuals who would be close contacts and notify them. Close contacts stay home and quarantine for 10 days and monitor symptoms. Test after 5 to 7 days (response testing).

Notify the staff and parents of the school site if positive case was at school via School Messenger.

Personally identifiable information on the positive case will not be shared.

# To do...

- ❑ Continue to watch the local data on COVID-19
- ❑ Continued collaboration and negotiations with LSEA and CSEA
- ❑ Panorama Survey # 2 for students, parents & staff- February 22nd to March 5
  - ❑ Ask if parents feel comfortable returning to school after educators receive vaccine
- ❑ Further development of 6th through 8th grade solutions
- ❑ Site implementation and development of training material
- ❑ Set up response testing for students
- ❑ Develop redundancies in staff training (ie Curative testing, contact tracing, etc)

# Considerations... longer term

- ❑ What will school look like in August?
- ❑ Offering Full Year Distance Learning next year
- ❑ Adjust our Board Administrative Regulations on Intradistrict Enrollment
- ❑ Determine when to ask families if they are interested in Fully Year Distance Learning 2021-2022

## Update from the Task Force- January 26th

Principals	Parents	LSEA Member	CSEA Member	District Staff
------------	---------	----------------	----------------	-------------------

### **Incremental steps toward return to In-Person Learning**

- Broader conversation with parents - the messaging of what hybrid is/looks like
- What will the return to school look like- Prepare instructions/video for students and families on what is expected of them coming back to school
- As much parent communication as possible, up to date news as well
- Asynchronous vs In Person learning - what does that exactly mean again for parents
- Open hours asynchronous for anyone (students) can check in with, ask questions, etc
- Learning Hubs are a great start



# Discussion/Action