



# **A Path Forward: Co-Location Restructuring Transition**

**Plan**

**February 12, 2025**



# Background and Decision Process

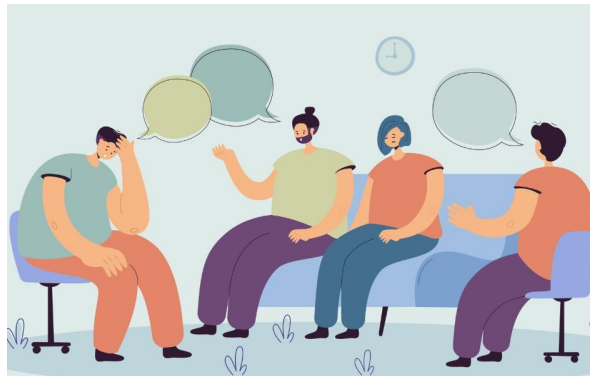
- **Transition Plan Overview**

- Various areas
- exhaustive & comprehensive

- **Background & Board Decision**

- How we arrived here
- Board action

- **Executive Summary**



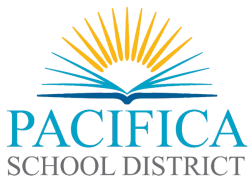
# Support for the Transition

## Supports: Multiple Perspectives and Voices to Guide The Transition

### Guiding Framework:

- **Supporting Our Staff** - We are committed to treat staff with respect, openness and provide transparency
- **Encouraging Our Students** - We are committed to ensure that all students will have access to high quality instruction, including academic enhancements.
- **Embracing our Families** - We are committed to ensure a welcoming, supportive and smooth enrollment process.

Each phase of the transition has support, information and guidance processes.



## Counseling Opportunities: Change Management a Path Forward

To further our goal of community well-being, each group will be offered counseling. The format of these group session(s) is still being developed. These session(s) are designed to offer support as we navigate these changes together.

Impacted group	Group 1	Group 2
Classified Staff	Classified Staff Transition Support	Classified Staff Transition Support
Certificated Staff	Instructional Staff Transition Support	Instructional Staff Change Transition Support
Students, Families & Community	Students, Community and Families Transition Support	Students, Community and Families Transition Support

## Other District Supports

Employees with the district have access to a broad range of supports and programs to assist with their physical and emotional well being:

- Employee Assistance Programs (EAP) - EAP counselors have a consultative role with managers and supervisors to address employee and organizational challenges and needs.
- EAP can offer trauma services to sites as a result of emergencies, disasters etc.
- Rights for Reasonable Requests for Accommodations for PSD Staff
- Listening Sessions -Our goal for the listening sessions is to better understand perspectives, concerns and experiences of those involved so that we could make more informed decisions and foster stronger relationships
- There is also a logistical table for support and information during the transition process. The broad logistical categories are staff, families and operations.



# Site Visionary Teams



## Site Visionary Teams: Definition, Structure, Outcomes

- Definition: Proactive sessions to engage in strategic planning and decision making to ensure goals of restructuring, optimizing resources and maintaining high quality instruction.
- Structure: School based teams that include site leadership, school staff and school community volunteers committed to a collaborative process to address site specific aims and objectives.
- Outcomes: Establish a framework for shared spaces, logistical solutions for after school care, develop a communication plan to maintain transparency of progress and a site based “road map” of transition steps.
- Visionary team meetings will take place in March for each campus.



# Transition Plan Team and Information



## **Regular Updates and Information on the Transition Plan**

[A Path Forward Co-Location and Transition Information Web Page:](#)

Information includes:

- Frequently Asked Questions for Budget and Budget Deficit
- Frequently Asked Questions for Co-Location and Transition Information
- Frequently Asked Questions for the Listening Sessions
- Interest Form for individuals who would like to be part of the transition team.
- Documents from the Board Work Sessions



## **Join the Co-Location and Restructuring Transition Team:**

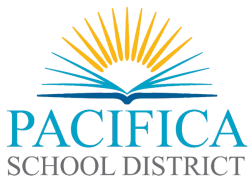
The Pacifica School District invites staff, parents, students, and community partners to join the Co-location-Restructuring Transition Team. This team will assist in guiding the co-location of SSR and Ocean Shore Schools and the transition of 6-8 grades from Ocean Shore and Vallemar to Ingrid B. Lacy and Cabrillo. The team will comprise approximately 30 members, it will play a vital role in ensuring a smooth transition that supports students, staff, and families.

Here is the interest form which is also available on the “Path Forward” web page.

[Interest Form](#)



# Enrollment and Lottery

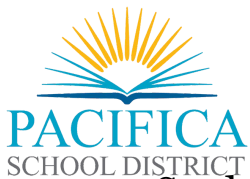


## Enrollment and Lottery Process

Pacifica School District's enrollment model is an Open Enrollment model. This means that eligible families can enroll their children in any of the schools in our school district. Our elementary district has designed two paths: A dual pathway (TK-5th + Middle School) and a single pathway (TK-8th grade). We are currently transitioning to having three TK-5th Grade schools, one TK-8th grade school and one 6th -8th grade middle school school. This translates to three dual pathways and one single pathway.

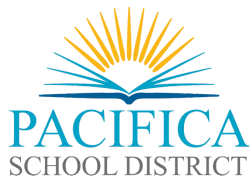
To provide parent choice regarding which elementary pathway to choose for their student the district has developed a lottery process for Transitional Kindergarten and Kindergarten as well as for 5th grade.

There is also a transfer process and families who do not get into their first choice school there is a wait list maintained in the event of vacancies a seat opens up at a school.



## Enrollment Considerations for the 2025-26 School Year:

- Students completing the 5th grade at a TK-5th grade school shall be guaranteed a space for the 6th grade at Ingrid B. Lacy Middle School.
- Students enrolled at Cabrillo shall be guaranteed a space in that program through the 8th grade.
- Vallemar and Ocean Shore students attending 6th - 8th grade in 2025-26 shall be guaranteed a space at Ingrid B. Lacy Middle School.
- For families with students who would like to transfer schools for the 2025-26 school year here is the process: On March 10th @ 8:00 am, the 2025-26 PSD Waitlist/Transfer Form will be available on our website.
- The TK/K lottery took place on Friday February 6th and results were posted on the same day. Waitlists were developed during that process and parents will be notified of their placement. Registration will be completed via online enrollment. Online enrollment information to follow.



# **Programming, Activities & Enhancements**



What does programming, activities, and enhancements look like?

We do not know. Why?

Site Visionary Teams



## Examples for Middle School Students

- Oceans 411
- Accelerated math program
- World Language Program
- Geography Bee 7th-8th grade
- Middle School Band
- Family Day
- Family community events
- School dances
- Big Buddies-Little Buddies
- Student Advisory Council



# Examples for Elementary School Students



- Oceans 411
- Standards Based Report Cards
- EL Master Plan
- World Language
- Dual Language Immersion
- PBIS
- College & Career Readiness K-8
- RTI
- ELD instruction and curriculum
- New ELA curriculum
- Project Based Learning



# **Staff/Site Relocation Plan**



- Staff/ Site Relocation Overview
- Dates are Estimates
- Assessment of Facility Needs
- Disposal of Materials

Move Begins